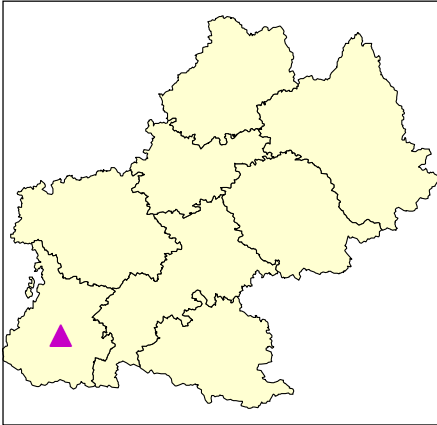




ARRETE PREFECTORAL DE PROTECTION DE BIOTOPE

RIVIERE ADOUR, ARTIGOU, GAOUBE, RIMOULA, L'ESPONNE

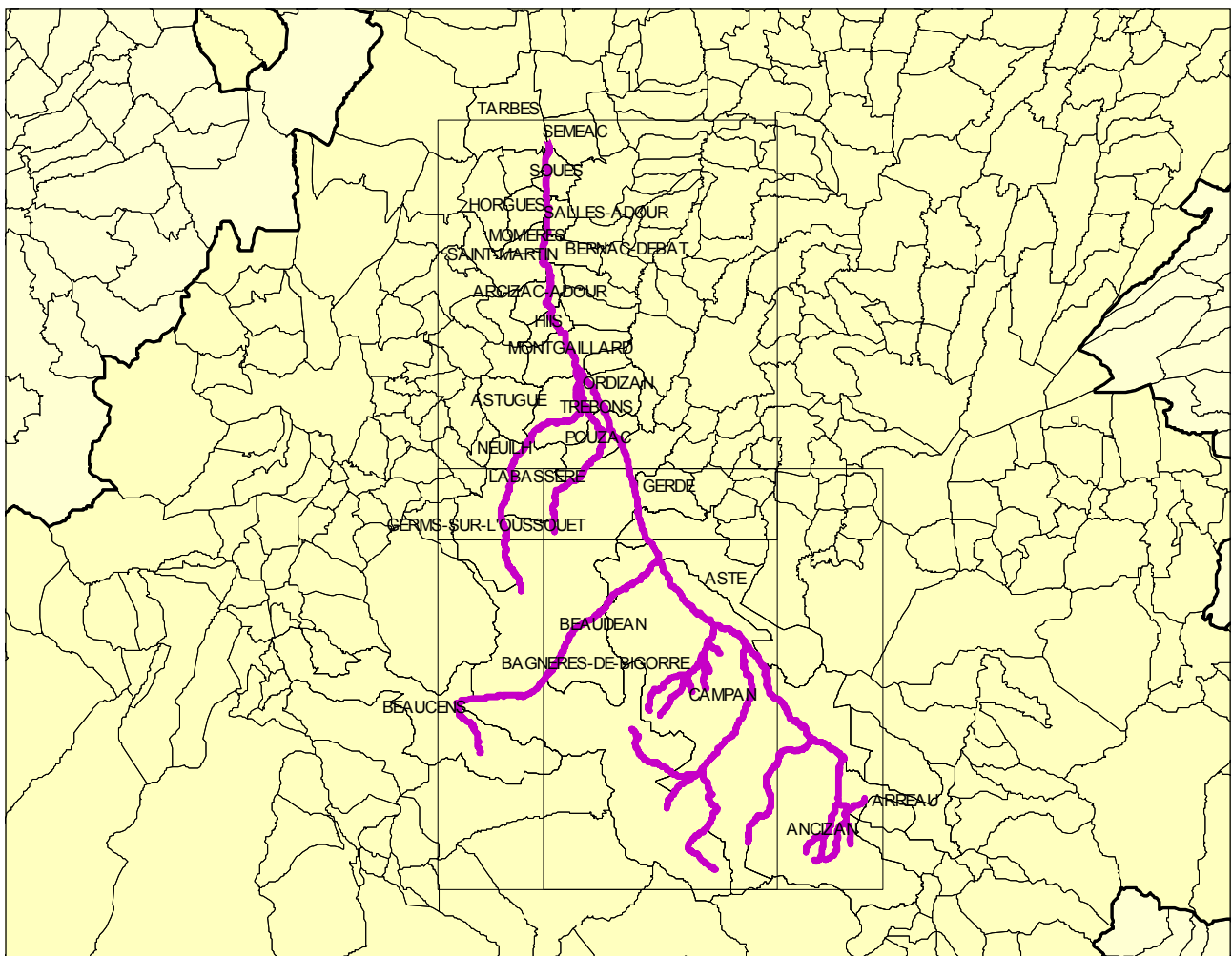


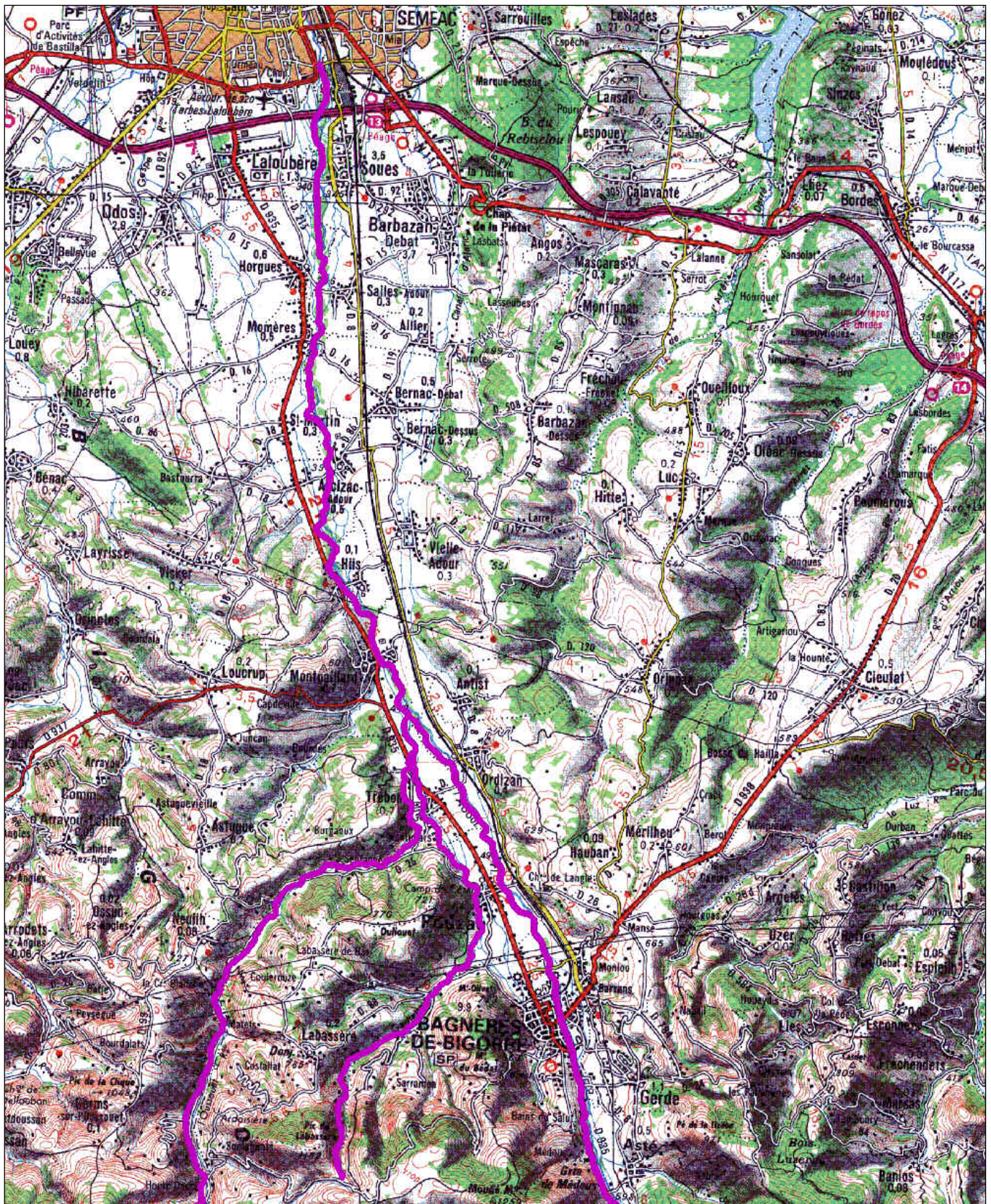
Procédure : Arrêté du 03/06/1997

Région(s) : MIDI-PYRENEES

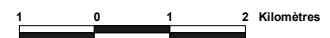
Département(s) : HAUTES-PYRENEES

Commune(s) : TARDES, SEMEAC, SOUES, HORGUES, SALLES-ADOUR, SAINT-MARTIN, MOMERES, BERNAC-DEBAT, ARCIZAC-ADOUR, HIIS, MONTGAILLARD, ORDIZAN, TREBONS, ASTUGUE, POUZAC, BAGNERES-DE-BIGORRE, NEULH, LABASSERE, GERDE, GERMS-SUR-LOUSSOQUET, ASTE, BEAUDEAN, CAMPAN, BEAUCENS, ANCIZAN, ARREAU



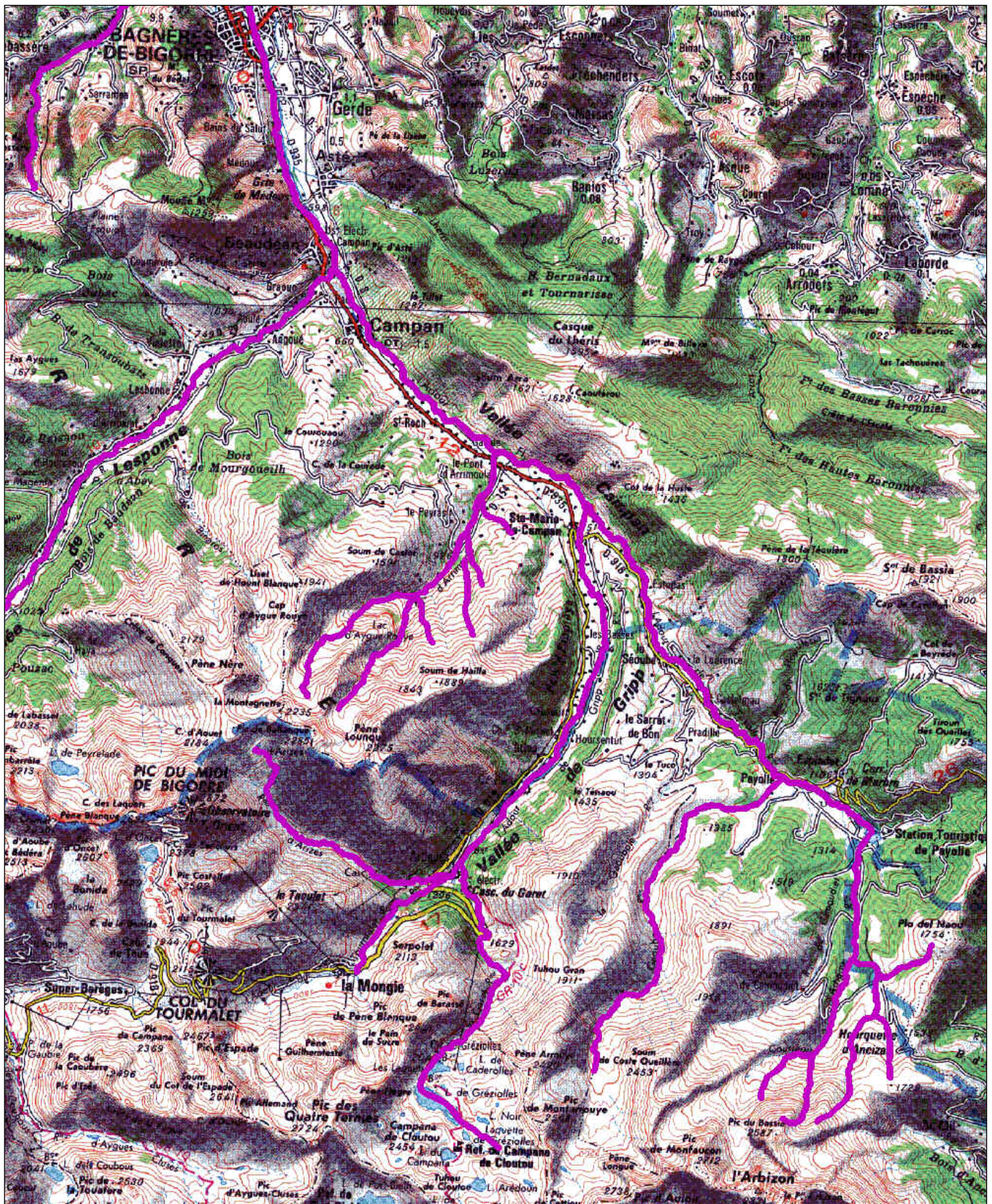


IGN SCAN 100 © MNHN/IEGB/SPN - MATE - DIREN MP

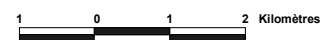


Arrêté Prefectoral de protection de Biotope :
RIVIERE ADOUR, ARTIGOU, GAOUBE, RIMOULA, L'ESPONNE

Arrêté du 03/06/1997

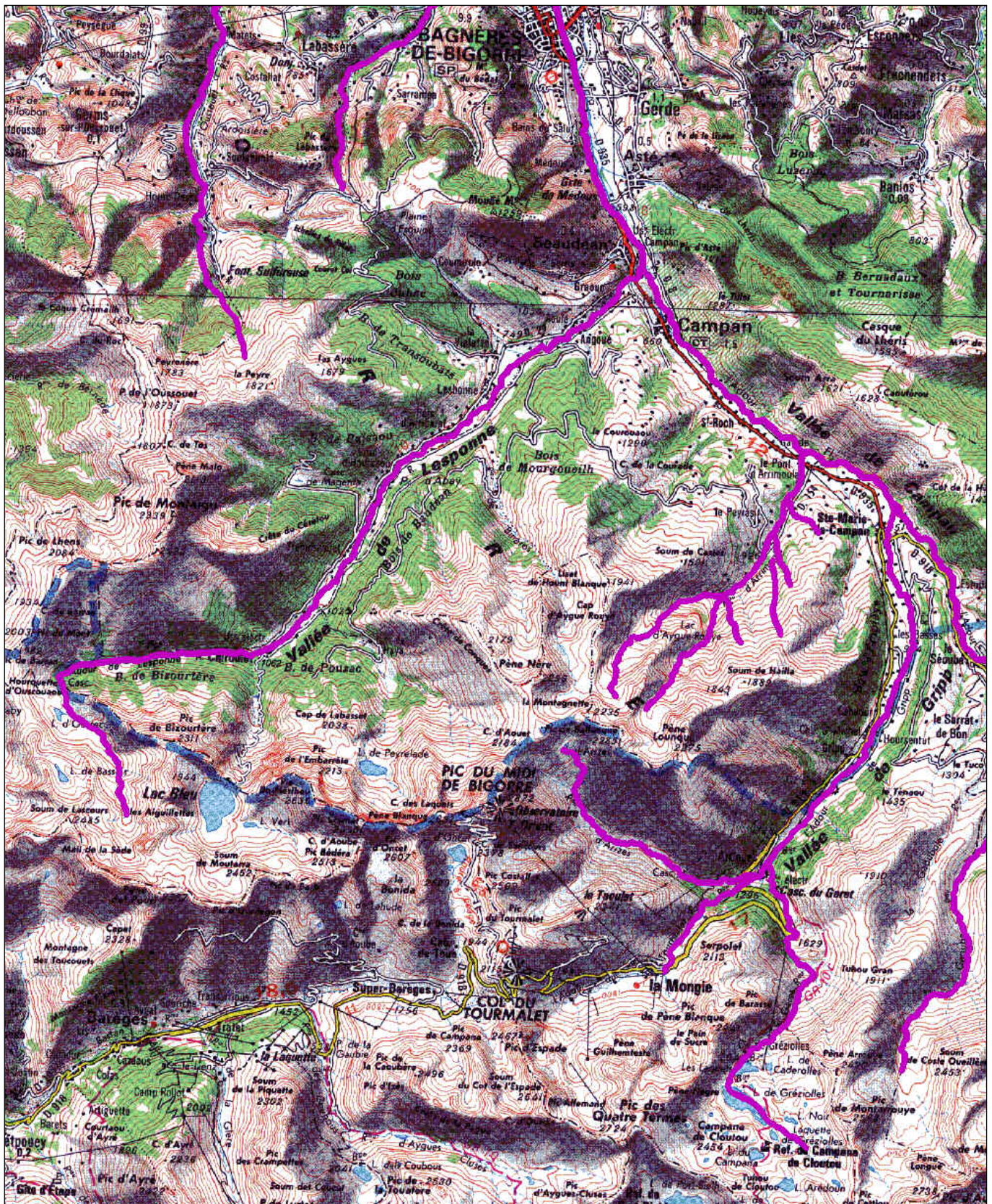


IGN SCAN 100 © MNHN/IEGB/SPN - MATE - DIREN MP



Arrêté Prefectoral de protection de Biotope :
RIVIERE ADOUR, ARTIGOU, GAOUBE, RIMOULA, L'ESPONNE

Arrêté du 03/06/1997



IGN SCAN 100 © MNHN/IEGB/SPN - MATE - DIREN MP



Arrêté Prefectoral de protection de Biotope :
RIVIERE ADOUR, ARTIGOU, GAOUBE, RIMOULA, L'ESPONNE

Arrêté du 03/06/1997